

State of Wyoming Corner Record

(In compliance with the CORNER PERPETUATION AND FILING ACT, Wyoming Statutes, 1977, Section 30-1-101, et. seq., and the Rules and Regulations of the Board of Registration for Professional Engineers and Professional Land Surveyors)

Reverse side of this form may be used if more space is needed

Record of original survey and citation of source of historical information (if corner is lost or obliterated). Description of corner monumentation evidence found and/or monument and accessories established to perpetuate the location of this corner. Sketch of relative location of monument, accessories, and reference points with course and distance to adjacent corner(s) (if determined in this survey). Method and rationale for reestablishment of lost or obliterated corner.

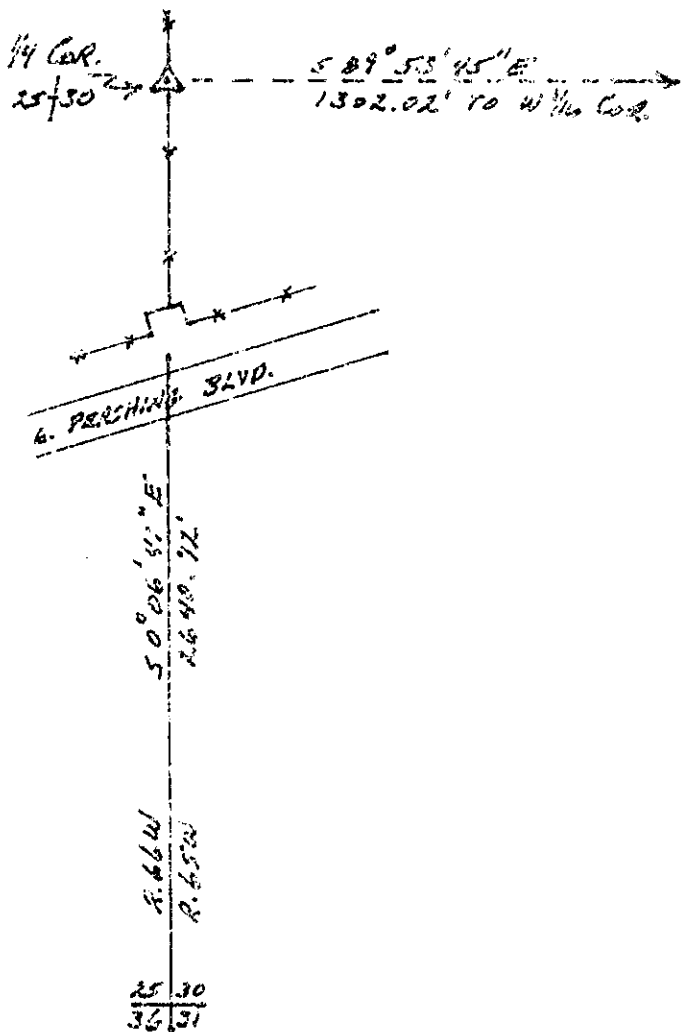
1/4 Corner for Sections 30, T14N, R65W and Section 25, T14N, R66W, 6th P.M., Laramie County, Wyoming.

G.L.O. RECORD: set 16" x 11" x 7" limestone marked 1/4, by Edwin James, June 1870.

OTHER RECORDS: ~~from~~ R.L. Hudson SURVEY OF 1875, RECORDED IN COUNTY ENGINEER'S OFFICE. STATE SURVEY NO. 1208-74.

FOUND: original G.L.O. monument loosely placed in the ground with a "1/4" etched in the top of the stone.

SET: I set offsets to the stone, then removed it from the ground and set a 36" long No 5 rebar with a 2 1/2" dia. aluminum survey cap stamped in accordance with B.L.M. Manual of Instructions and with "WYO. P.L.S. NO. 4828". Placement of the new survey monument was approximately 3" below the surface. I then reset the original stone monument back in place over the new monument.



200168
LARAMIE COUNTY CLERK
CHEYENNE, WY.
1997 MAR 31 PM 1 10

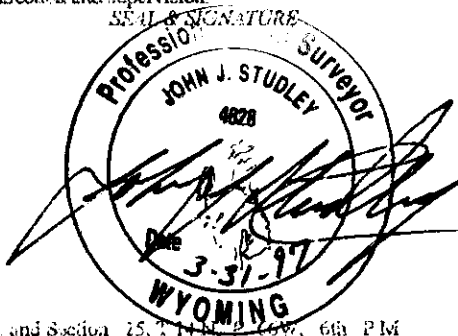
NOT TO SCALE

CROSS INDEX DIAGRAM

1	2	3	4	5	6	7	8	9	10	11	12	13	14	15	16	17	18	19	20	21	22	23	24	25
A																								
B																								
C																								
D																								
E																								
F																								
G																								
H																								
I																								
J																								
K																								
L																								
M																								
N																								
O																								
P																								
Q																								
R																								
S																								
T																								
U																								
V																								
W																								
X																								
Y																								
Z																								

Date of Field Work: November 1995
 Office Reference: _____
 Firm/Agency: Address
John J. Studley, Inc., 3302 Franklin Street
3302 Franklin Street
Cheyenne, Wyoming 82001
 Telephone Number: (307) 634-3358

This corner location was prepared by me or under my direction and supervision.



Course Name: 1/4 Cor. Sections 30, T14N, R65W, and Section 25, T14N, R66W, 6th P.M.
 Cross-Reference: T14N R65W of T22N T15W, 6th P.M. SW 1/4 Sec 15, T14N, R65W
 Survey P.L.S. No. 4828